

$$y = x - 6$$

$$y = 0 - 6$$

X	Y
0	-6

plugged
in

$$Y\text{-int.} = -6$$

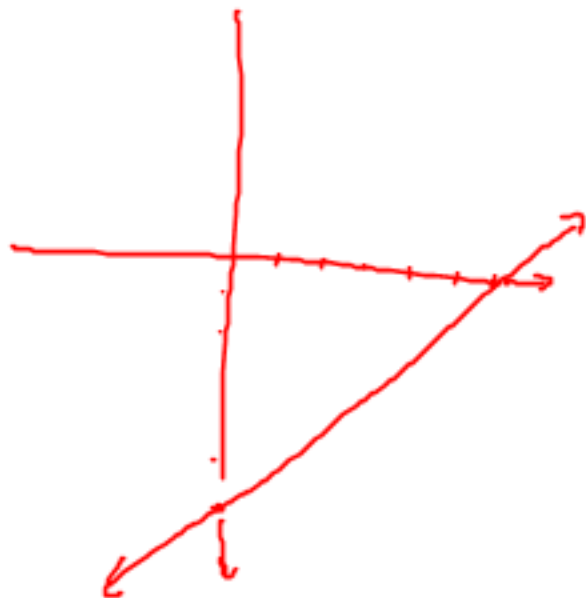
$$0 = x - 6$$

$$x = 6$$

X	Y
6	0

plugged
in

$$X\text{-int.} = 6$$



$$x + 2y = 4$$

x	y
0	

$$0 + 2y = 4$$

$$2y = 4$$
$$\frac{2y}{2} = \frac{4}{2}$$

$$y = 2$$

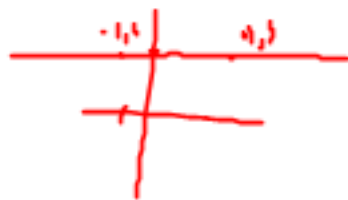
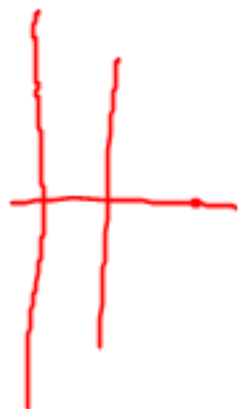
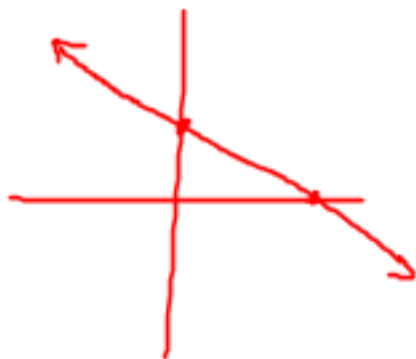
$$y \text{ int.} = (0, 2)$$

x	y
	0

$$x + 2(0) = 4$$

$$x = 4$$

$$x \text{-int.} = (4, 0)$$



Homework
pg. 285

25-33

instructions: find x and y
intercepts and
graph